

Network Camera Firmware

Version: V5.5.75_201123

Release Notes

(2020-12-11)

Improved Features:

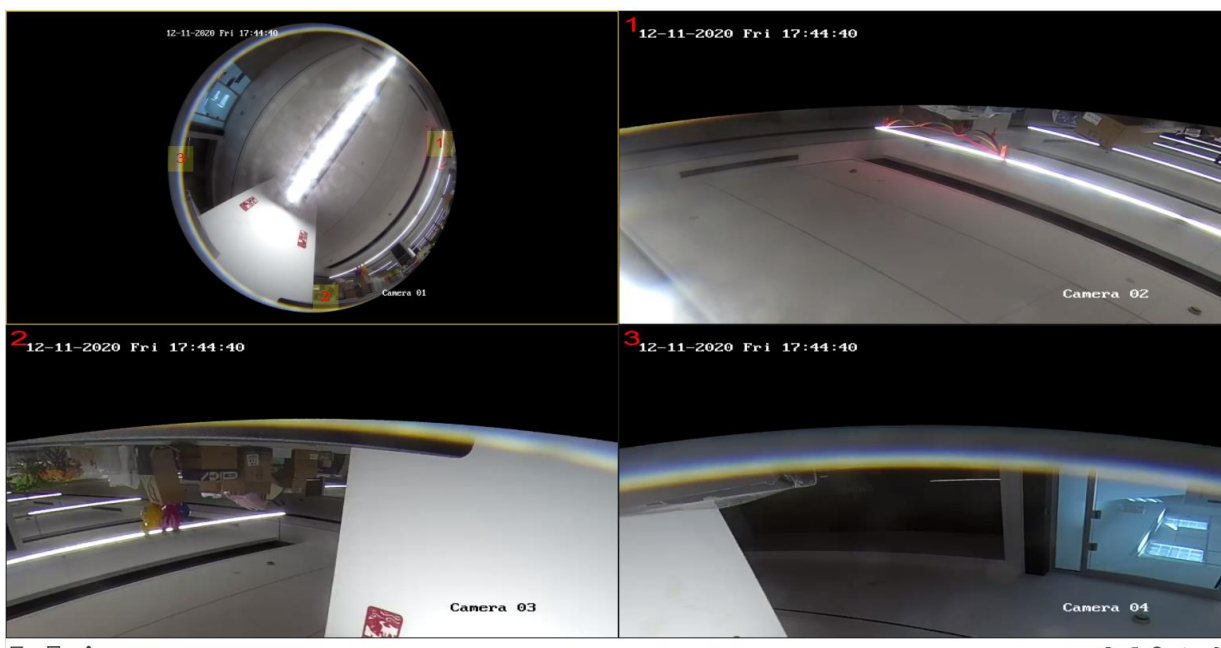
Optimize the performance of the ePTZ mode:

Users can view the edge of the PTZ channels clearly. See below image for reference:

Previous Firmware:



New Firmware:





First Choice for Security Professionals

Customer Impact and Recommended Action

This update refers to function/compatibility improvement and will take effect automatically after the Date of Change. We are very sorry for any inconvenience of use-habit changes caused by this action. For any questions and request for this firmware, please contact our local technical support team.

Remarks:

- Hikvision reserves the right to change, alter or withdraw the above notification without prior notice.
- Product design and specifications are subject to change without prior notice.
- The Hikvision firmware may contain defects or errors known as errata which may cause the product to deviate from published specifications. Current characterized errata are available on request.
- Hikvision is not liable for any typing or printing errors.

Hikvision Digital Technology CO., Ltd.
No. 555 Qianmo Road, Binjiang District, Hangzhou 310051, China
Tel: +86-571-8807-5998
FAX: +86-571-8993-5635
Email: overseabusiness@hikvision.com

Supported Product List
DS-2CD63C5G0-IS 1.29mm, DS-2CD6365G0E-IS 1.27mm DS-2CD63C5G0E-IS 2mm, DS-2CD6365G0E-S/RC 1.27mm DS-2CD63C5G0E-S/RC 2mm, DS-2CD63C5G0-IVS 1.29mm DS-2CD63C5G0E-IVS 2mm, DS-2CD6365G0E-IVS 1.27mm